

***i*IDENTIFY**

The Search Engine for Shape ... **On the Go!**

Bridging the Gap for Identification of Parts

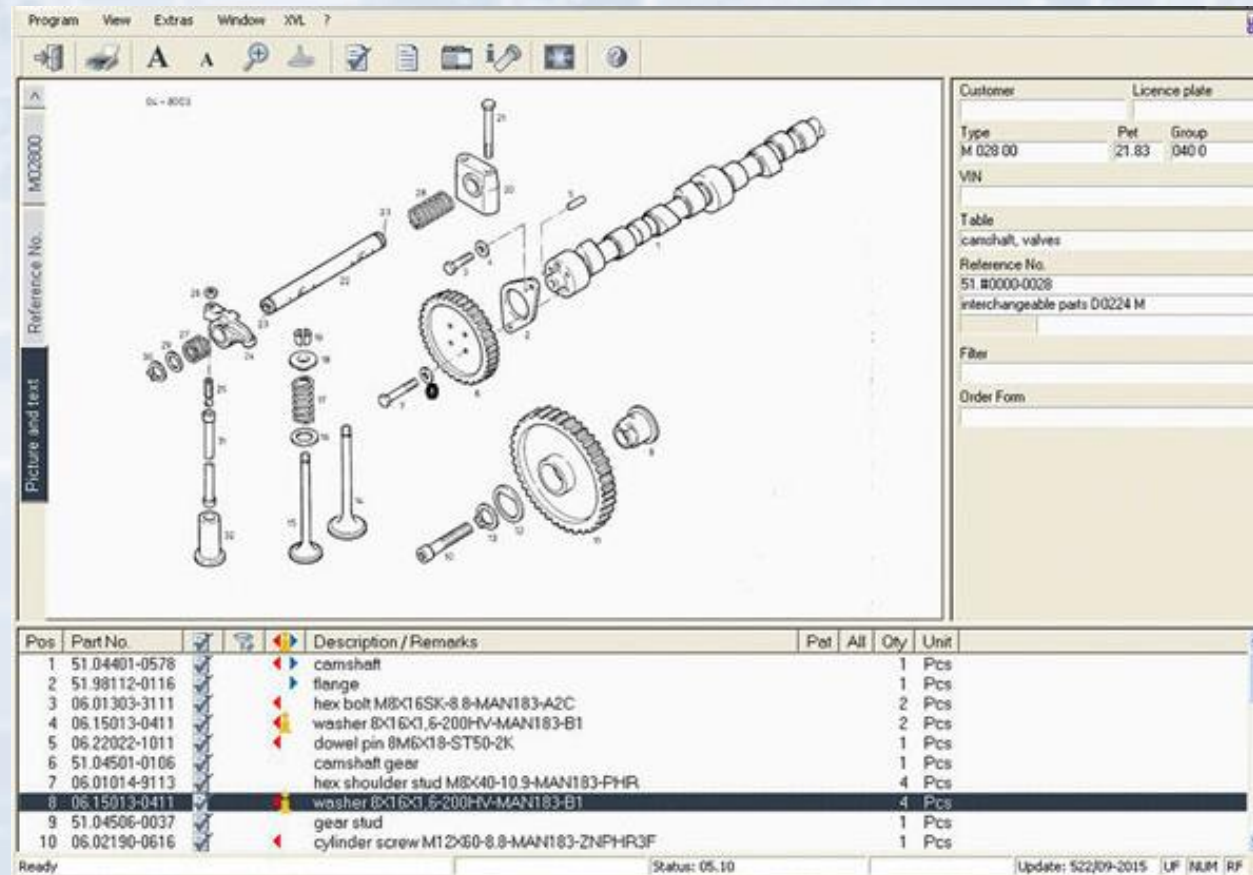


ISEEK Corporation

Search / Identification / Analytics

There's a Chasm

Parts catalogs, filled with static 2D images, are perhaps the closest connection that field personnel have to engineering data.



Opportunity

This lack of connectivity misses the opportunity to provide an automated means to more easily:

Identify a Part



Quickly Find a Substitute



Simplify 3D Printing



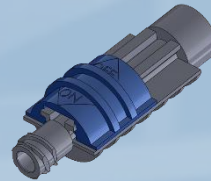
the Solution

iIDENTIFY is a smart phone or tablet application that connects a firm's physical and digital worlds, allowing identification of physical parts with standard photos.

iIDENTIFY matches photos to CAD, providing greater precision in identifying parts, and the ability to inspect a retrieved model in 3D for greater confidence in identification.



On-the-fly encoding



Identifies the part
using CAD data



Also retrieves similar
potential substitutes



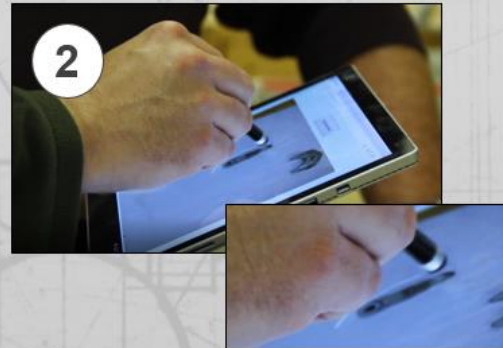
Including STL
format for 3D printing

Three Simple Steps

iIDENTIFY works with any android, iOS or Windows mobile device, and is incredibly simple to use.



Take a picture

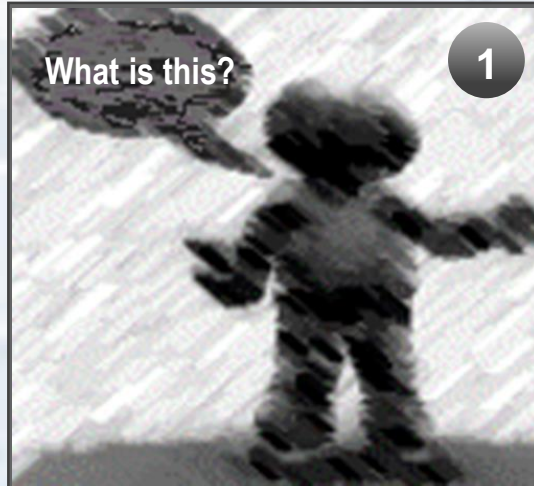


**Outline the part with a
finger or stylus**



Push the search button

Use Cases

**1**

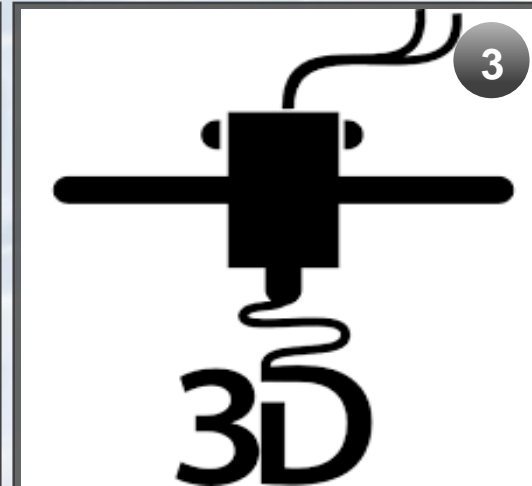
IDENTIFICATION

iIDENTIFY bridges the gap between the physical and virtual worlds, allowing part identification in seconds.

**2**

SUBSTITUTION

iIDENTIFY also finds versions with different finishes, or similar parts that might work with a little modification for time-critical supply situations.

**3**

3D PRINTING

iIDENTIFY also works with STL models for direct retrieval of files ready for 3D printing.

Identification



... at factories where unlabeled parts can often become *orphaned*...



... in the field when technicians struggled with small diagrams, limited information and superseded parts ...



... and at the parts-counter where personnel often have to play *detective*.

Substitution

Because iIDENTIFY is geometry-based, a search simultaneously retrieves a list of similar parts that might be useful substitutes for time-critical repairs when customers might be willing to use a part with a different material or finish, or even one that requires slight modification for use.



AU-4761-B
100.0%



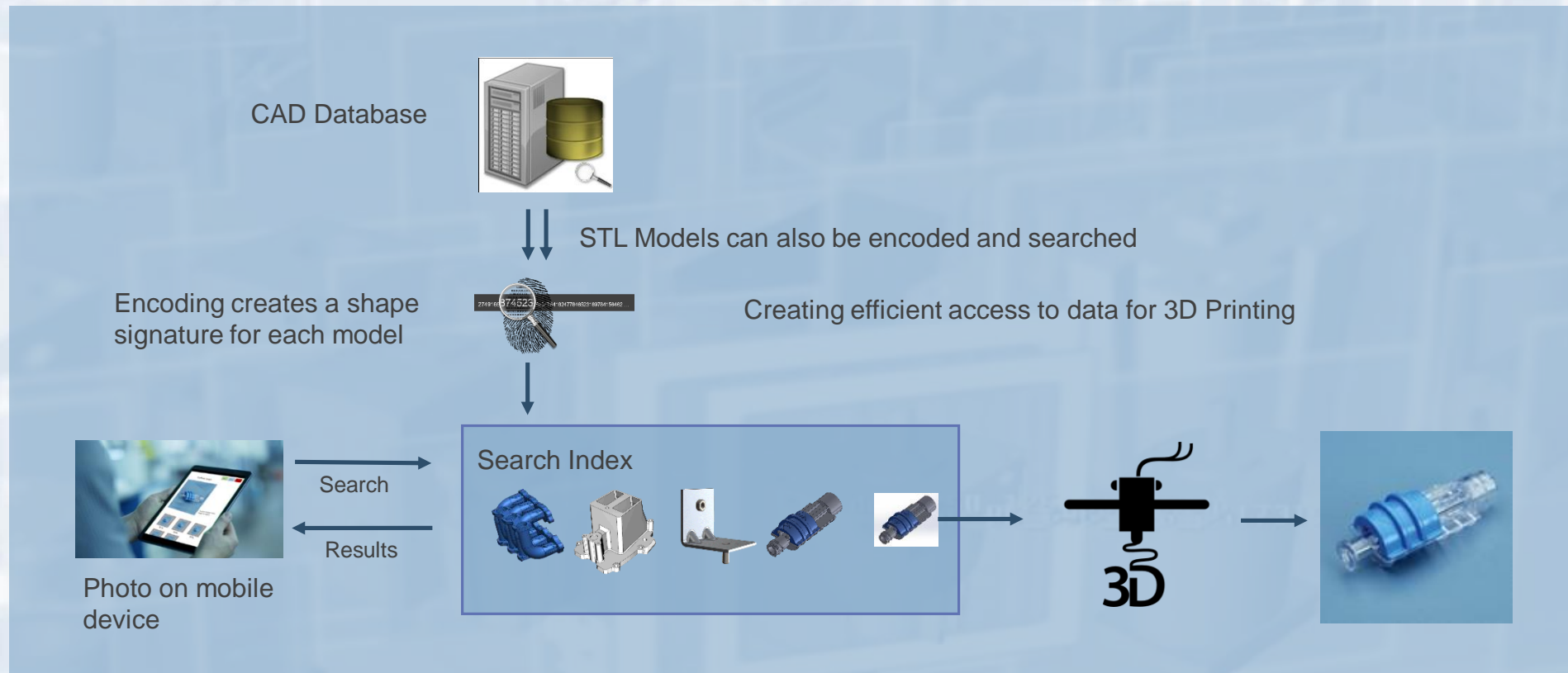
B-4761
99.9%



AB-47616-B
98.9%

Architecture

Rather than matching photos to a library of 2D images, iIDENTIFY utilizes signatures from 3D CAD. This innovation provides accuracy and allows search results to be viewed in 3D for greater confidence in selection.

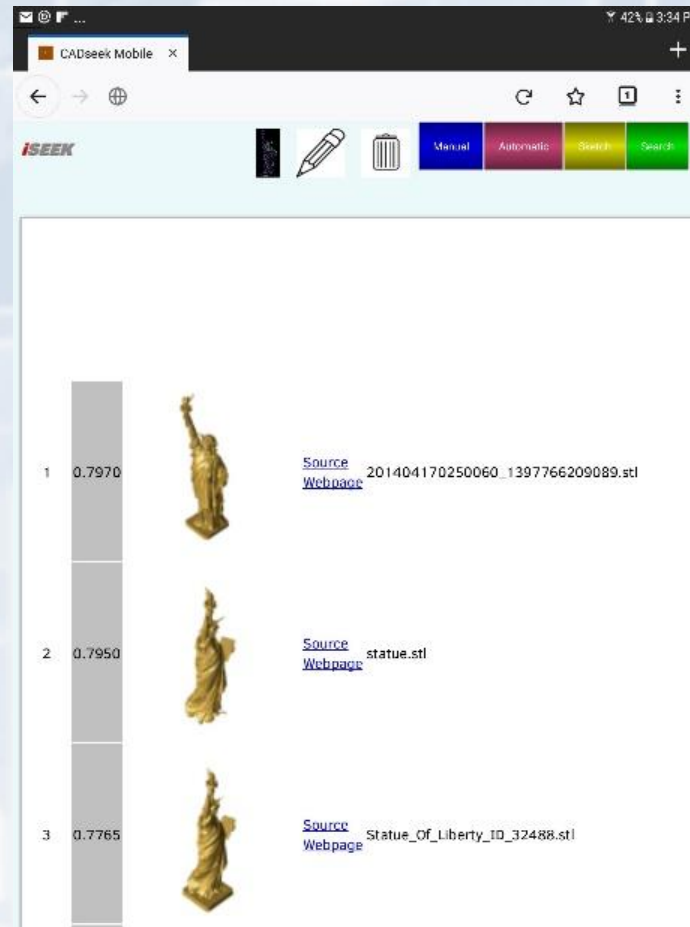


Technology

iIDENTIFY is **NOT** based on a library that would limit it's scope to specific industry.



Photo of a physical object



Example photo was matched to STL files in the ThingVerse.com online database.

Input Options

A photo of a physical object is the most likely way users will start a search, however, iIDENTIFY allows a variety of input options.

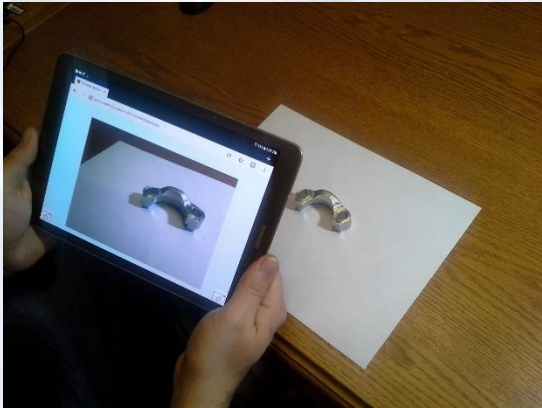
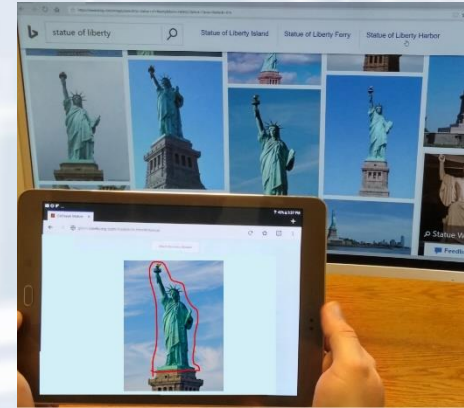


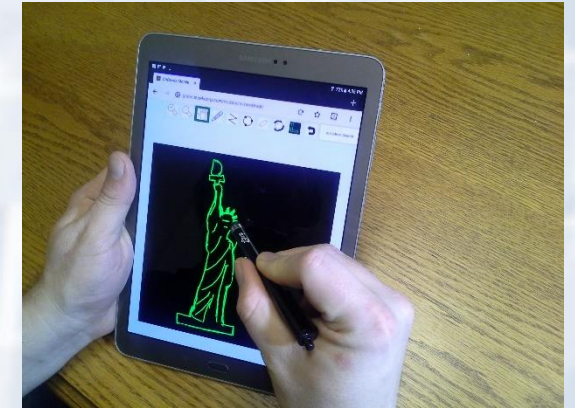
Photo of a physical part



Photo of a hand-drawn sketch



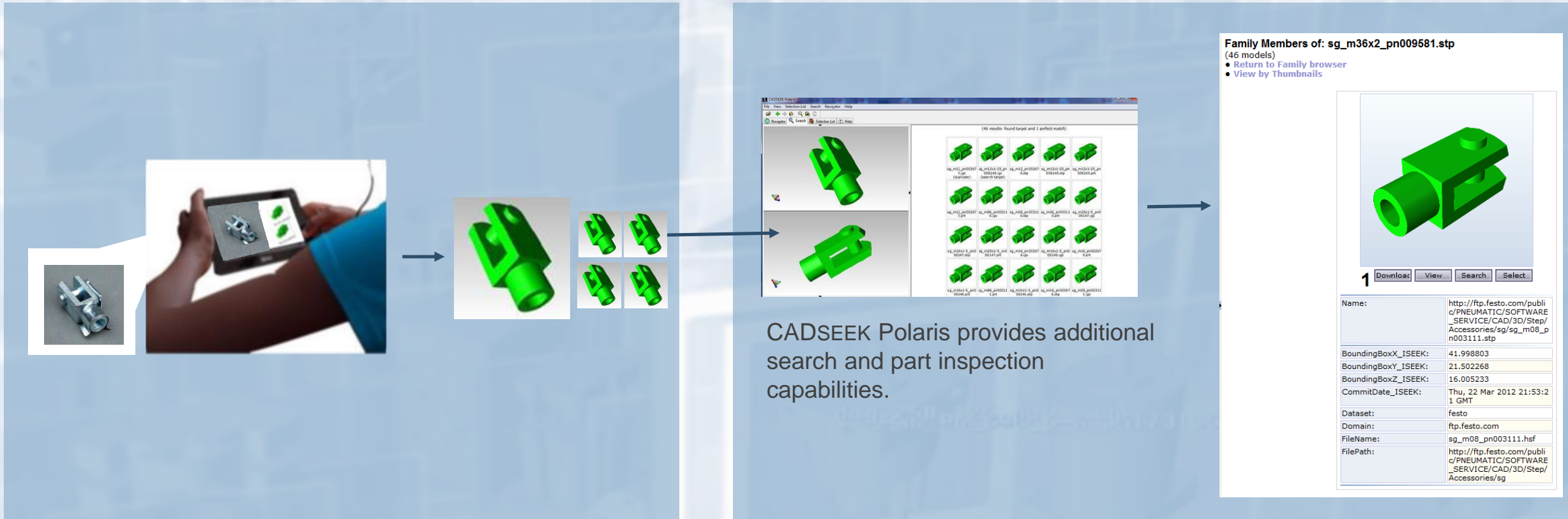
Picture of a picture, even
on a computer monitor



Sketch directly in the
iIDENTIFY Application

Integration

iDENTIFY can be fully integrated with CADSEEK Polaris, which is iSEEK's search application for design engineers and supply chain personnel.



iDENTIFY

CADSEEK Polaris

A Suite of Solutions Spanning the Enterprise

Design

Supply Chain

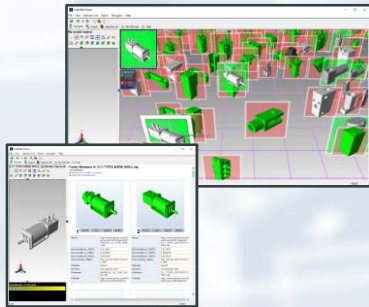
Engineering
Management & I/T

Sales

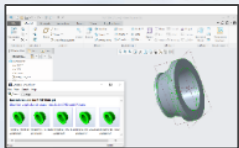
Manufacturing

Distribution &
Service Parts

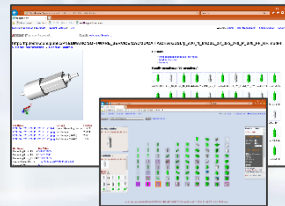
CADSEEK Polaris
The Search Engine for Shape



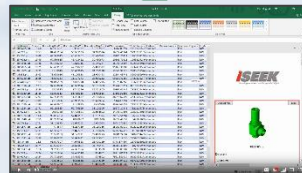
CADSEEK Adviser
Live Search



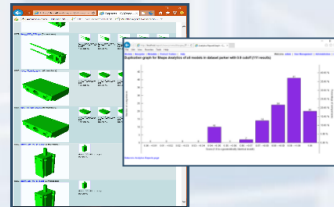
CADSEEK Connect



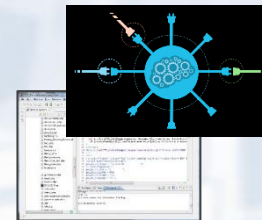
CADSEEK Excel
Microsoft Excel Add-In



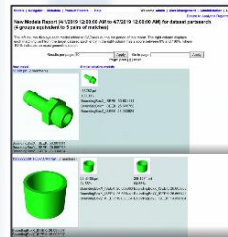
CADSEEK Analytics



Embedded Solutions



CADSEEK Sentry



iIDENTIFY



ShapeID
Intelligent Part Codes



The background of the slide is a photograph of a paved path or road that curves through a lush, green landscape. On the right side of the path, there are several large, mature trees with dense green foliage. The path leads towards a bright, open area in the distance, possibly a field or a clearing. The overall scene is peaceful and natural.

iSEEK Corporation

Thank you for your interest in CADSEEK Mobile.

To request a demonstration of any of our products please contact sales@iseekcorp.com, or at 515.296.4156.

Demonstration videos are available on our website at www.iseekcorp.com